

Procedure
HIGH RISE INCIDENTS

Effective Date

Rescinds
New

Reference
FIRE CHIEFS ASSOCIATION OF CENTRAL OHIO
NORWICH TOWNSHIP FIRE DEPARTMENT SOG# 8

Page 1 of 11

Purpose:

The purpose of this procedure is to provide a guideline for the operation at incidents or situations that may arise during the course of an operation. Each member is expected to know, understand and operate according to this guideline as each situation arises.

Responsibility:

- I. It shall be the responsibility of the department officers to implement this operating guideline.
- II. It shall be the responsibility of the department officers to train members in the application of this guideline.
- III. It shall be the responsibility of each member to know, understand and use this guideline as it applies to the situation at hand. Each member will use good judgment in the use of this guideline.

Guideline:

FOREWORD

High Rise Incidents are extremely different from the day to day fire situations we encounter. Initial response of manpower and equipment is enhanced to address the uniqueness of the High Rise Incident and therefore, the coordination and accountability of teams become a more demanding responsibility. This SOG is designed to familiarize you with the tasks, locations, and responsibilities of the positions that you may be assigned.

OVERVIEW

Establish Command Post

Upon arrival, a Command Post must be established, usually in the lobby near the elevators and Annunciator Panel. If fire or smoke is visible, a second alarm may be requested, and the Incident Commander will consider establishing an outside Command Post. Communications within the building will be established using the following procedures, in this order of priority:

1. Firefighters' building telephone system.
2. The in-house telephone system in direct contact with the Command Post.
3. The in-house telephone system in direct contact with the Fire Alarm Office.
4. Mobile and hand-held radios.

INITIAL ATTACK/INVESTIGATION TEAM:

A. The first Engine Company and the first Ladder Company to arrive will be designated the "Initial Attack/Investigation Team". This team will proceed to the reported fire location to determine the nature of the incident via the stairway, relay the information to the Incident Commander and take appropriate actions.

B. The 2nd arriving Engine Co's pump operator shall establish a water supply for the sprinkler and standpipe system.

C. Lobby Control will be handled by the crew of the 2nd arriving Engine Company which will gain control of the elevators and access to the stairwells. Lobby Control will establish accountability and transport equipment to higher floors.

Sprinkler system Support

The Driver/Operator of the 2nd arriving Engine Co will connect to a hydrant and support the buildings' fire suppression system.

Lobby Control

The second arriving Engine company crew shall establish the Lobby Control Sector. The primary objective of the Lobby Control Sector is to obtain control of the elevators and access to the stairwells. They will log and transport companies and equipment to the upper floors.

Remaining Companies

The 3rd engine, the 2nd ladder, and the rescue company will typically be assigned to ventilation and evacuation.

As the situation escalates, the Incident Commander shall assign remaining companies as needed.

POSITION DETAILS

COMMAND POST & Incident Command

WHO:

The first arriving unit at a high rise alarm, if not proceeded to the scene by a chief officer, shall establish a fixed Command Post by leaving one man, the Incident Commander, at the Command Post location.

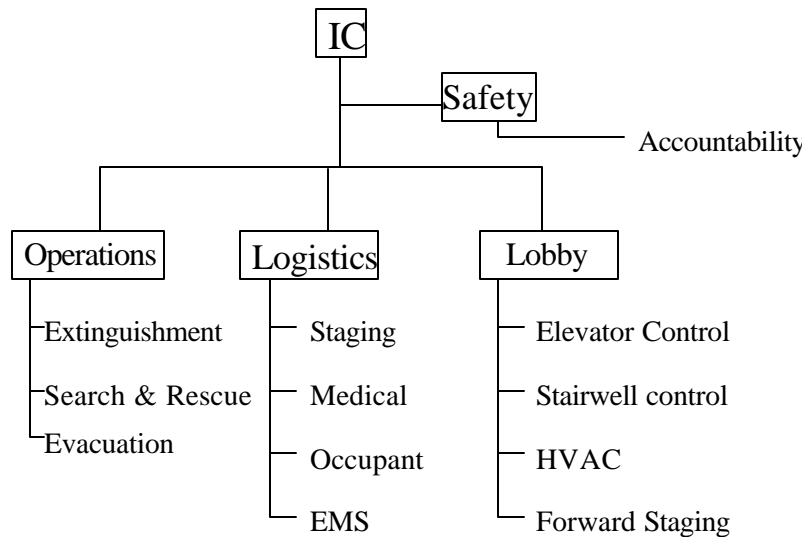
WHERE:

The command post may be established in the main lobby near the elevators, alarm panel, and in-house phone system.

The Incident Commander may consider an outside command post utilizing their command vehicle. The Command Vehicle shall be positioned upwind and at least 200 feet from the building to protect from flying glass and debris.

RESPONSIBILITIES:

The Incident Commander shall be responsible for the total operation and the Command Post is the position from which the incident is managed.



OPERATIONS SECTOR

The Operations Sector is responsible for overseeing the operations that address the initial call for assistance.

WHO:

As designated by the Incident Commander, typically the next highest ranking officer available will become the Operations Officer.

WHERE:

Usually the floor below the fire floor, but at the discretion of the Operations Officer.

RESPONSIBILITIES:

1. The Operations Officer first priority will be to establish communications to the Command Post. Communications within the building will be established using the following procedures, in this order of priority:

- a. Firefighters' building telephone system.
- b. The in-house telephone system in direct contact with the Command Post.
- c. The in-house telephone system in direct contact with the Fire Alarm Office.
- d. Mobile and hand-held radios.

2. Directs all rescue and extinguishment operations
3. Directs personnel to and from the Rehabilitation Sector as necessary.
4. Determines and requests the necessary resources to accomplish those goals.
5. Keep the Command Post informed of progress and other pertinent information.

INITIAL ATTACK/INVESTIGATION TEAM

The 1st arriving Engine Company will be the Initial Attack/Investigation team. Their function is to go to the area of the building reporting the emergency, do a complete size-up, report their findings, and initiate the appropriate action.

WHAT TO TAKE:

- A. Engine Companies
 1. Fire fighters
 - a. radios
 - b. personal tag lines
 - c. lights
 - d. spare cylinders
 - e. high rise pack consisting of 150' 2½" light weight hose and nozzle
 - f. Watercan (maximum personnel)
 2. Officer
 - a. radio
 - b. TIC (thermal imaging camera)

- c. personal tag line
- d. Officer bag consisting of 2½"-2½" gated wye, 3" leader line w/pressure meter, spanner wrench, pipe wrench, screw driver, door chocks, & rubber door bands.

B. Ladder Company

- 1. Fire fighters
 - a. radios
 - b. personal tag lines
 - c. lights
 - d. water cans
 - e. irons (halligan and flathead axe)
 - f. forcible entry bag
- 2. Officer
 - a. radio
 - b. TIC (thermal imaging camera)
 - c. 200' bag rescue rope
 - d. 6' "Z" hook/rake hook

RESPONSIBILITIES:

The Initial Attack/Investigation Team will proceed to the reported fire location to determine the nature of the incident and inform the Incident Commander via size up.

Begin the initial fire attack.

No fire or smoke discovered, investigate the reported area.

LOBBY CONTROL SECTOR

The function of Lobby Control is to obtain control of lobby elevators and stairwell access, direct firefighters to proper stairways, record companies assigned to fire duties, receive equipment from the Staging Sector and transport equipment to the Resource Sector, and control building communications.

WHO:

The second engine company to arrive, unless otherwise ordered by the Command Post.

WHERE:

In the lobby near elevators or stairways.

RESPONSIBILITIES:

1. Recall elevators to the lobby area.
2. Locate stairways.
3. Locate annunciator, security console, and fire control station.
4. Obtain elevator keys for fire department operations.
5. Obtain stairway keys and fire department hand telephones, if available, for distribution to sector commanders as assigned when entering the building.
6. Direct fire fighters and equipment to stairways.
7. Record companies entering the building and the location to which they are transported.
8. The driver of the second arriving engine company, after laying lines to the standpipe and sprinkler Connections shall report this fact to the Command Post.

REMAINING COMPANIES:

The 3rd & 4th Engine Companies, 2nd Ladder and the Rescue company will typically be assigned to Ventilation, Backup support, Floor above, RIC, Resources and Evacuation.

As the situation escalates, the Incident Commander shall assign companies and establish, as needed, the following:

1. Operations
2. Ventilation Group
3. Evacuation Group
4. Safety
5. Staging
6. Resource Group
7. Stairwell Support Group
8. Rehab Group
9. Medical Operations Group
10. Water Supply Group
11. Floor(s) Above Divisions

STAIRWELL SUPPORT/EQUIPMENT RELAY

Stairwell support group is responsible for moving equipment from the lobby or forward staging area to the Resource Group by using the stairwells. The Stairwell Support Group may not always be used. The manpower requirements soon become substantial in a serious high rise fire where equipment must be transported by stairwell considerable distances. The greater the distance the greater the manpower need.

WHO:

Assigned by the IC. May include several companies.

WHERE:

In the building stairwell, beginning in the lobby area. At least one firefighter on each stair well landing. Eq system may be used to bring equipment down.

RESPONSIBILITIES:

Once the stairwell relay is in place, equipment can be sent to the forward resource area from the lobby. The Resource Group will determine what equipment is needed unless directed by IC.

Equipment to Consider:

1. Spare cylinders(account for different manufacturers & pressures in use)
2. Hose
3. Nozzles
4. Forcible Entry tools
5. Overhaul tools
6. Lighting
7. Fans
8. Electric Cords
9. Attic Ladders
10. Ropes
11. Salvage covers
12. Environment Monitoring equipment
13. EMS Supplies
14. Drinking fluids

RESOURCE GROUP FUNCTIONS

The function of the Resource Group is to maintain a manpower and equipment bank for the IC.

Upon arrival on the scene, apparatus should come to the command side of the building and remove equipment that is needed from their apparatus and take it to the designated area close to the stairwell

being used for the equipment relay. Apparatus should then be move away from the potential collapse area to park and allow room for other responding apparatus to drop their equipment.

WHO:

The person in charge of the Resource Group shall be designated by the IC. All unassigned companies directed up into the building shall report to the Resource Group for assignment.

WHERE:

Primary position of the Resource Group will be close to the base of the stairwell that will be used by the equip

RESPONSIBILITIES:

The Resource Officer will maintain a personnel pool, including Rapid Intervention Crew(s), preferably a 6 member company.

Also, an inventory of needed equipment will be assembled. (List is not all inclusive)

1. SCBA Bottles
2. Hose Packs
3. Nozzles
4. Forcible Entry tools
5. Overhaul tools
6. Lighting
7. Fans
8. Electric Cords
9. Attic Ladders
10. Ropes
11. Salvage covers
12. Environment Monitoring equipment
13. EMS Supplies
14. Drinking fluids

C. Recordkeeping. The officer in charge of the resource Group must maintain a log of companies as they arrive in the Resource Group and as they are assigned to operations.

VENTILATION AND EVACUATION SECTOR

WHO:

Usually the 3rd engine, the 2nd ladder, and the 1st rescue company. The ranking member of the sector, or whoever the Operations Officer designates, shall be in charge.

WHERE:

The floor or floors above the fire.

RESPONSIBILITIES:

Shall be responsible for maintaining contact with the Operations Officer and keeping him informed of all developments encountered.

Ventilation - Success in fighting fires in high rise buildings is affected greatly by ventilation or the lack of it.

Methods of Ventilating:

1. **Automatic:** allowing the building's automatic ventilation system to ventilate the building.
2. **Semi-Automatic:** manually adjusting the controls of the building's ventilation system.
3. **Manual:** opening and closing doors, windows, and other openings as needed.

Evacuation of Occupants

1. Primary victim search
2. Assisting occupants in exiting the building.
3. Secondary victim search.

STAGING SECTOR

Shall be established at the discretion of the Incident Commander, and automatically established on a Standby 2nd or greater alarm.

WHO:

The First Company Officer to arrive at the designated staging area will become the Staging Officer.

All companies dispatched on the multiple alarm will respond to the designated Staging Area and report to the Staging Officer. Companies will standby their apparatus with crew intact and warning lights OFF.

WHERE:

As designated by the Incident Commander, preferably in an area with adequate parking away from the fire area.

RESPONSIBILITIES:

Using face-to-face communication, the Staging Officer will assign companies and equipment to the areas designated by the Incident Commander. Using radio communications, the Staging Officer will advise the Incident Commander which companies have been assigned.

Maintain an inventory of apparatus and manpower in the Staging Sector. Insure that a minimum of two engines and one ladder is kept in the Staging Sector at all times unless advised otherwise by the Incident Commander.

The Staging Officer, if requested to do so by the Command Post, may communicate directly with Fire Dispatch for additional resources, otherwise the Staging Officer will advise the Command Post when the level of resources in Staging is reduced to minimum level.

A major Medical Emergency may require a separate staging area for squads and medics.

SAFETY SECTOR

The responsibilities of the Safety Sector shall be addressed in all working high rise incidents. The Safety Officer will be responsible for the Safety Sector and maintaining constant communication with the Incident Commander.

WHO:

The department Safety Officer or as designated by the Incident Commander.

WHERE:

The Safety Sector will be mobile and will be responsible for monitoring the entire incident. Multiple people may be assigned this task

RESPONSIBILITIES:

- a. Firefighter Accountability
- b. Evaluation of firefighter safety and operations
- c. Observe firefighter stress and overexertion
- d. Evaluation of structural stability
- e. Watch for unusual hazards; toxic or explosive conditions
- f. Watch for condition which might require a change from offensive to Defensive strategy
- g. The Safety Officer has the authority to by pass the Chain of Command when it is necessary to correct unsafe acts immediately, such as removing all personnel from the areas of imminent danger.
- h. The Incident Commander must ALWAYS be informed of these corrective actions.

WATER SUPPLY GROUP

WHO:

An Engine Company may be assigned by the Incident Commander to fulfill the task of Water Supply Group.

WHERE:

Adjacent to the Fire Pump location for the building and the fire department connection to support the standpipe & sprinkler operations.

RESPONSIBILITIES:

The Water Supply Group shall determine the operation of the fire pumps. Are they working?, Is sufficient pressure being developed?, Are the valves open?, Is the fire department connection supplied properly?, and Are pressure reducing devices hindering the fire attack operation?

REHABILITATION SECTOR

When crews exhibit signs of physical or mental fatigue, the entire crew will be temporarily assigned to the Rehabilitation Sector by the Operations Commander. When necessary, the officer in charge of a crew may also request reassignment to the Rehabilitation Sector, if not previously directed by the Operations Commander.

WHO:

As assigned by the Incident Commander.

WHERE:

Located in a safe area, out of the way of emergency operations, preferably within walking distance of the incident.

RESPONSIBILITIES:

Secure an area that will permit personnel to rest.
Provide a source of liquids, food, and environmental protection as appropriate.
Monitor physical and mental condition of crews in the Rehabilitation area and report any problems to the Incident Commander.

MEDICAL OPERATIONS SECTOR

WHO:

As assigned by the Incident Commander

WHERE:

In a location readily accessible from the incident scene, preferably with access available for EMS transport vehicles.

RESPONSIBILITIES:

Responsibilities include:

- *Triage
- *Treatment
- *Transportation of patients.

The command structure within this sector should be expanded as needed.